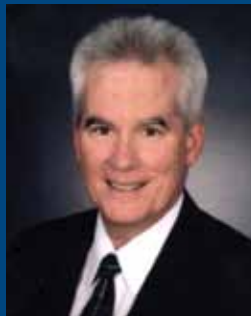


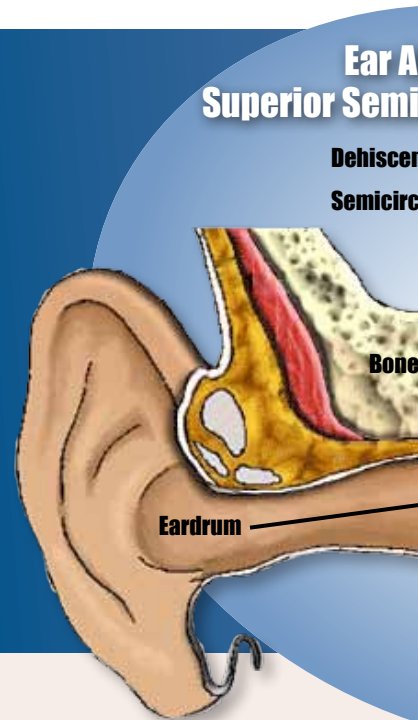
Surgical Specialties Strike the Perfect Balance in McLaren OR



Wayne Robbins, D.O.



Syed Karim, MD,



For the first time in the area, a neurotologist and a neurosurgeon have teamed up to treat a rare balance disorder in the McLaren OR. This type of collaboration between Wayne Robbins, D.O., and Syed Karim, MD, may be the first step in expanding opportunities for the specialties of otolaryngology and neurological surgery to work together to correct complex medical conditions.

Lloyd Minor, MD, at John Hopkins first described the condition of Superior Semicircular Canal Dehiscence Syndrome in 1998. Before, this small group of afflicted patients were unable to find a cure for the intermittent dizziness and hearing loss that characterizes the disease. Vertigo, a feeling of spinning dizziness, can be produced by a wide variety of causes. Superior Semicircular Canal Dehiscence represents only a small portion of these patients. This condition most commonly occurs spontaneously as a result of thinning of the temporal bone, the bone that forms the base of the skull just above the ear. This allows the brain to put pressure on the delicate membranes of the semicircular canal which is responsible for detecting head motion and reporting it to the brain. As a result, increasing pressure

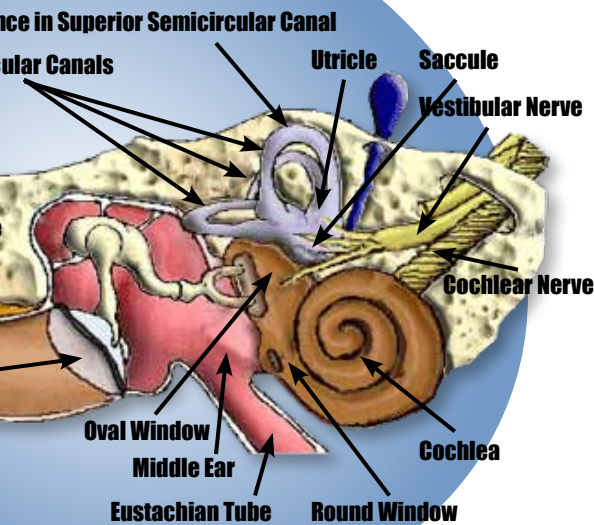
in the brain by activities such as coughing, sneezing or bending over will cause an intense feeling of spinning. Hearing loss also occurs in the affected ear as sound waves can be shunted out through the dehiscence reducing the intensity of sound transmitted to the hearing nerve. Other symptoms such as autophony and increased transmission of bone conducted sounds are common.

Until earlier this decade, a small group of people who suffer from vertigo were most likely unable to find long-term relief from dizziness or an intermittent whooshing sound in their ears. Of all the people affected by vertigo, only a portion have a deteriorated temporal bone causing the problem. First discovered in 1998, “superior semicircular canal dehiscence” is a condition where the temporal bone (the region of the skull base which houses the inner ear - the cochlear and the vestibular organs, including the semicircular canals in the ear) is worn down or has completely deteriorated causing the brain to put pressure on the semicircular ear canal, disrupting the normal flow of fluid and resulting in vertigo.

Previously patients with superior semicircular canal dehiscence had to travel out of the area to receive surgical treatment. To correct this condition Dr. Karim relieves the pressure placed on the canal by lifting the brain off the temporal bone, allowing Dr. Robbins to obliterate the affected canal. This stops the abnormal flow of perilymph through the canal which relieves the vertigo and most often the hearing loss as well. The patient has made a full recovery and no longer experiences the frequent episodes of dizziness and sound disturbances which had become disabling. ■

“I view the success of this procedure as a first step in a new direction for specialties working together in the OR,” stated Dr. Robbins. “McLaren has strongly supported efforts to bring the most advanced medicine and procedures to the area. Flint has high quality medical care and it’s nice to be able to provide these specialized treatments to the people of our community.”

Anatomy and Superior Semicircular Canal Dehiscence



Could your patient's dizziness be caused by Superior Canal Dehiscence?

What to look for

Patients with conductive hearing loss in one ear with episodes of dizziness brought on by noise or increased pressure on the brain. Activities such as bending down, sneezing, or bearing down during a bowel movement can cause this type of pressure.

Diagnostic Tests

A simple test to determine if vertigo is caused by superior semicircular canal dehiscence is increasing pressure in the ear canal with a pneumatic otoscope, a fistula test. Pressure against the ear drum will trigger dizziness in effected patients. Patients can be referred for the more advanced Vestibular Evoked Myogenic Potentials (VEMP) test to gather more definitive information.

More information regarding treatment for

"superior semicircular canal dehiscence" can be found on Dr. Robbins' website

MichiganENTdoctors.com

Those interested in scheduling an appointment with Dr. Robbins can call the office of

Ear, Nose, Throat & Plastic Surgery Associates, P.C. at (810) 694-0600.

continued from page 1

The selection criteria used to evaluate facilities were developed with input from a panel of expert physicians. To be designated as a Blue Distinction Center for Spine Surgery and a Blue Distinction Center for Knee and Hip Replacement, the following types of criteria were evaluated. More information on selection criteria is available on bcbs.com:

- Established acute care inpatient facility, including intensive care, emergency care, and a full range of patient support services with full accreditation by a CMS-deemed national accreditation organization
- Experience and training of program surgeons, including case volume

- Quality management programs, including surgical checklists as well as tracking and evaluation of clinical outcomes and process of care
- Multi-disciplinary clinical pathways and teams to coordinate and streamline care, including transitions of care
- Shared decision-making and preoperative patient education

"Blue Distinction puts a high value on research and evidence-based health and medical information," said Allan Korn, M.D., Blue Cross and Blue Shield Association Chief Medical Officer. "Blue Distinction Centers show our commitment to working with doctors and hospitals in communities across the

country to identify leading institutions that meet clinically validated quality standards and deliver better overall outcomes in patient care." ■



The Blue Distinction designation is awarded by the Blue Cross and Blue Shield companies to medical facilities that have demonstrated expertise in delivering quality health care in the areas of bariatric surgery, cardiac care, complex and rare cancers, knee and hip replacement, spine surgery and transplants. The program is part of The Blues® efforts to collaborate with physicians and medical facilities to improve the overall quality and safety of specialty care.